



Cultural Facilities Fund

Fiscal Year 2024 Annual Report





MassDevelopment and the Mass Cultural Council are pleased to submit the 17th annual report on activities of the Massachusetts Cultural Facilities Fund, as required by Chapter 123 of the Acts of 2006, *An Act Relative to Economic Investments in the Commonwealth to Promote Job Creation, Economic Stability, and Competitiveness in the Massachusetts Economy*.

This report presents the Fund's financial statements and chronicles Cultural Facilities Fund grants as of June 30, 2024.

In Fiscal Year 2024, we were pleased to jointly announce 116 grants totaling \$9.3 million awarded to municipal and nonprofit cultural organizations across the Commonwealth. This latest round of grants comes from a \$50 million bond authorization approved by the Legislature.

In a comprehensive survey conducted by the Mass Cultural Council in 2024, 149 Cultural Facilities Fund grantees reported:

- 1,200 full-time jobs and \$109 million in wages and salaries at organizations in the current round of funding.
- 38,506 architects, engineers, contractors, and construction workers employed on Cultural Facilities Fund projects over all rounds of funding.
- 3,344 new permanent jobs projected in Massachusetts as a result of Cultural Facilities Fund projects over all rounds of funding.
- 281 cultural organizations reported plans to proceed with \$1.3 billion in capital projects over the next three years.

Thank you for entrusting MassDevelopment and the Mass Cultural Council with this landmark program. Together, we pledge our continued commitment to making the Cultural Facilities Fund a cultural and economic development program that truly works for Massachusetts.

Navjeet K. Bal
President and CEO, MassDevelopment
Chair, Cultural Facilities Fund Advisory Committee

Michael J. Bobbitt
Executive Director, Mass Cultural Council
Member, Cultural Facilities Fund Advisory Committee

Background

In July 2006, the Massachusetts Legislature created the Massachusetts Cultural Facilities Fund (CFF) through Chapter 123 of the Acts of 2006, *An Act Relative to Economic Investments in the Commonwealth to Promote Job Creation, Economic Stability, and Competitiveness in the Massachusetts Economy*. The Legislature created a partnership between MassDevelopment and the Mass Cultural Council to accomplish the following goals:

- Enhance the state’s creative economy by partially financing the acquisition, construction, expansion, renovation, and repair of cultural facilities.
- Stimulate further investment in the arts, heritage, entertainment, humanities, and interpretive sciences by preserving cultural resources.
- Increase employment, entrepreneurialism, and tourism to the regions where these facilities are located, including tourism from outside the Commonwealth.

Cultural Facilities Fund Advisory Committee

The statute established a Cultural Facilities Fund Advisory Committee to guide MassDevelopment and the Mass Cultural Council in the design and implementation of this program. The Committee is charged with providing advice on the management and operation of the Fund, reviewing grant recommendations from the Mass Cultural Council, and voting to recommend the grants it approves to the MassDevelopment Board of Directors, which authorizes CFF grants. MassDevelopment administers and disburses CFF grants.

The Advisory Committee includes six gubernatorial appointees with expertise in fundraising, finance, and construction, representing six different geographic regions of the Commonwealth: central Massachusetts, greater Boston, MetroWest, northeast, southeast, and western Massachusetts. Also serving on the Committee, as designated by the statute, are the executive directors of the Mass Cultural Council, the Massachusetts Office of Travel and Tourism, and the president and CEO of MassDevelopment.

As of June 30, 2024, the members of the Advisory Committee are: John Stowe, Vice Chair, Worcester; Michael Halperson, Boston; Jennifer Harrington, Boston; Michael J. Bobbitt, Executive Director, Mass Cultural Council; Kate Fox, Executive Director, Massachusetts Office of Travel and Tourism; and Dan O’Connell, who at the time was Chair and Interim President & CEO of MassDevelopment.



Berkshire Music School, Pittsfield

“The CFF has allowed us to get data that we have never had before which has allowed us to start exploring options and making informed decisions about our 150-year-old building.”

— Luis Granda, Executive Director

Fund Activity to Date

The Cultural Facilities Fund Advisory Committee and the MassDevelopment Board of Directors have approved 1,515 grants totaling \$171 million from FY07 to FY24. The program's capital grants total \$162 million, and planning grants total \$9 million.

State appropriations totaling \$175.5 million from FY07 to FY24 have supported these awards:

- \$13 million from the economic stimulus bill of July 2006
- \$5 million from the FY08 state budget approved in July 2007
- \$7 million from a supplemental appropriation approved in October 2007
- \$6.5 million from the FY09 state budget approved in July 2008
- \$7 million from the FY09 capital bond appropriation approved in April 2009
- \$7 million from the FY11 capital bond appropriation approved in November 2010
- \$5 million from the FY12 capital bond appropriation approved in November 2011
- \$5 million from the FY13 capital bond appropriation approved in October 2012
- \$15 million from the FY14 capital bond appropriation approved in November 2013
- \$15 million from the FY15 capital bond appropriation approved in July 2014
- \$10 million from the FY16 capital bond appropriation approved in June 2015
- \$10 million from the FY17 capital bond appropriation approved in June 2016
- \$10 million from the FY18 capital bond appropriation approved in June 2017
- \$10 million from the FY19 capital bond appropriation approved in June 2018
- \$10 million from the FY20 capital bond appropriation approved in June 2019
- \$10 million from the FY21 capital bond appropriation approved in June 2020
- \$10 million from the FY22 capital bond appropriation approved in June 2021
- \$10 million from the FY23 capital bond appropriation approved in June 2022
- \$10 million from the FY24 capital bond appropriation approved in June 2022

A list of the FY24 round of grants appears in Appendix A; a geographic and organizational distribution of the grants appears in Appendix B.



The Children's Museum of Franklin

“The Cultural Facilities Fund grant gave Children's Museum of Franklin, a new 501(c)3 nonprofit, the ability to take the first steps in bringing a new cultural/educational facility to a region in need of access to education through play.”

— Meghann Hagen,
Executive Director

Fund Activity: FY24

In June 2024, Governor Maura Healey approved a FY24 capital appropriation of \$10 million to the Cultural Facilities Fund. Prior to this the legislature approved a \$50 million bond authorization to make this appropriation possible.

On September 20, 2023, the Cultural Facilities Fund Advisory Committee approved two measures: 1) new guidelines and applications for the FY24 grant cycle and 2) funding of 28 capital grants totaling \$3.1 million from the FY23 pool of applicants. The MassDevelopment Board of Directors approved these measures on October 12, 2023, and the FY24 application was released publicly.

On October 18, 2023, the Mass Cultural Council recorded a webinar to explain the guidelines and application process for interested applicants.

The deadline for FY24 applications was December 14, 2023. A total of 231 organizations from every region in the Commonwealth submitted requests for \$23.1 million in grants to support capital projects totaling \$346 million.

Five Cultural Facilities Fund review panels convened through remote meeting in early March 2024. The panels included professionals with expertise in real estate development, historic preservation, community economic development, cultural tourism, real estate finance, facility operations, and nonprofit fundraising. The panels rated each application according to the review criteria published in the Cultural Facilities Fund guidelines.

After the panels conducted their analysis, the Cultural Facilities Fund Advisory Committee met to review the panel's work on April 24, 2024. The Cultural Facilities Fund Advisory Committee's recommendations were then presented to the MassDevelopment Board of Directors on April 26, 2024, and the process resulted in an approval of the new application and 88 grants totaling \$6,153,900.

Note: Two rounds of funding were approved in this fiscal year, \$3,140,000 in October 2023 and \$6,153,900 in May 2024.

In May 2024, the latest FY24 round of Cultural Facilities Fund grants were announced via press releases and legislative notifications.



Hudson Cultural Alliance, Hudson

"The Cultural Facilities Fund has been and continues to be critical to the success of our project. It has allowed us to solidify our organization by hiring consultants to assist us in producing our art and cultural center's operating plan. Most importantly, we have been able to hire an architect who has begun working with consultants to produce critical design documents."

*Thomas W. Desmond,
President & Founder*

Leveraging Additional Investment

All Cultural Facilities Fund grantees are required to raise a minimum dollar-for-dollar match from sources other than the Commonwealth, though most grantees raise more than their matching grant goal. From FY07 to FY24 Cultural Facilities Fund grantees funded and financed a total of \$3 billion to implement their respective capital projects.

Economic Impact

To assess the impact of Cultural Facilities Fund grant dollars on the economy, the Mass Cultural Council surveys all organizations that receive grants from the Fund. The survey findings highlight the important role of these organizations in the Massachusetts economy. For example, 77 recent Cultural Facilities Fund grantees reported that they employ 1,200 full-time equivalent employees and paid \$109 million in annual wages and salaries.

The Cultural Facilities Fund also supports thousands of construction jobs. Projects funded between FY07 and FY24 employed 38,506 architects, engineers, contractors, and construction workers statewide. In addition, 3,344 new jobs have been projected at cultural facilities in Massachusetts because of these projects.

Future Demand

The Mass Cultural Council also surveyed capital projects in the state's cultural sector that are in the planning stages. In November 2024, 281 organizations reported their pipeline of facilities projects over the next three years totals at \$1.3 billion. This includes \$589 million in renovation projects, \$636 million in new construction projects, and \$102 million in real estate acquisition.



Martha's Vineyard Film Society, Tisbury

"The Cultural Facilities Fund has been a significant contributor to the success of the MV Film Society which operates the MV Film Center. It allowed us to purchase our physical building in 2021 and now with our newest grant, allowed us to upgrade and renew our digital projection system, providing for a bright future for our nonprofit arthouse cinema and cultural arts center."

*Richard Paradise,
Executive Director*

Financials

Statement of Sources and Uses of Funds from inception through June 30, 2024

Sources of Cash:

| | |
|----------------------------------------------------|--------------------|
| Appropriation October 25, 2006 | \$13,000,000 |
| Appropriation August 7, 2007 | 5,000,000 |
| Appropriation November 26, 2007 | 7,000,000 |
| Appropriation October 31, 2008 | 6,500,000 |
| Capital Bond Appropriation, June 3, 2009 | 7,000,000 |
| Capital Bond Appropriation, Fiscal Years 2012-2024 | 113,091,440 |
| Other receipts and reimbursements | 945,910 |
| FY22 Receipts from Mass Cultural Council | 5,468,053 |
| Investment Income as of June 30, 2024 | 2,722,681 |
| Total Sources of Cash | 160,728,084 |

Uses of Cash:

| | |
|--------------------------------------|------------------------|
| Grant Disbursements | (140,869,240) |
| Grants accrued not paid at 6/30/2024 | 339,932 |
| Administrative Expenses | (11,783,263) |
| Total Uses of Cash | \$(152,312,571) |

Remaining Cash at June 30, 2024 **\$8,415,513**

Total Sources of Cash: **160,728,084**

| | |
|--------------------------------|----------------------|
| Committed Funds | |
| Grants Awarded | (171,444,146) |
| Funds Not Disbursing | 4,326,411 |
| Expenses Paid | (11,783,263) |
| Remaining Reserve for Expenses | (750,567) |
| Appropriations not yet Funded | 20,908,640 |
| Total Committed Funds | (158,742,925) |

Uncommitted Funds at June 30, 2024 **\$1,985,159**



Revolutionary Spaces, Boston

“The Cultural Facilities Fund has allowed us to continue our work preserving the Old South Meeting House so that it can be enjoyed by the next generation of Bostonians. Funding for preservation and repair work can be hard to find and CFF’s continued support for our work has been vital to the success of our organization.”

*Lauren Sottile,
Director of Development*

APPENDIX A: CFF FISCAL YEAR 2024 AWARDS

Capital Grants

| Organization | Municipality | Grant | Description |
|---------------------------------------------------------------|--------------|-----------|-----------------------------------------------------------------------------------------------------------------------------------------------------------------------|
| Acton Community Center, Inc. | Acton | \$160,000 | Preserve the structure and improve the functionality, accessibility, and safety of the Theatre III building. |
| The Andover Historical Society | Andover | \$112,000 | Acquire the former November Club building at 6 Locke Street in Andover. |
| Town of Andover | Andover | \$71,000 | Improve acoustics, sound amplification, and assisted listening devices in the Old Town Hall public meeting space, and an ADA compliant lift to the performance stage. |
| Belmont Public Library | Belmont | \$100,000 | Rebuild the free Belmont Public Library. |
| Cabot Performing Arts Center, Inc. | Beverly | \$104,000 | ADA compliant renovations to the stage area. |
| American Congregational Association | Boston | \$60,000 | New HVAC system. |
| Boston Dance Studios, Inc. | Boston | \$79,000 | Renovate three studios, bathrooms, dressing rooms, and reception area. |
| Boston Youth Symphony Orchestras, Inc. | Boston | \$200,000 | The addition of two classrooms, storage space, faculty workspace, and for acoustical treatments to an existing classroom and the auditorium. |
| Children's Museum of Boston | Boston | \$125,000 | New flooring. |
| Lyric Stage Company of Boston, Inc. | Boston | \$68,000 | New lighting and backstage renovations. |
| New England Conservatory | Boston | \$127,000 | Replace the video wall display in the center's entryway and to install permanent audio visual streaming capabilities in the Plimpton Shattuck Black Box Theatre. |
| The Proprietors of the Boston Athenaeum, Inc. | Boston | \$145,000 | Support renovations for the expansion into 14 Beacon Street. |
| The Reynolds Center for Teaching, Learning & Creativity, Inc. | Boston | \$142,000 | Support the transformation of a former bank building into a digital media arts center. |
| The Vilna Shul, Boston's Center for Jewish Culture, Inc. | Boston | \$167,000 | Repair and restore the front plaza, which also serves as a roof over the basement below with its restroom and mechanical room. |
| USS Constitution Museum, Inc. | Boston | \$94,000 | New HVAC system. |

| Organization | Municipality | Grant | Description |
|-------------------------------------------------------|------------------|-----------|--------------------------------------------------------------------------------------------------------------------------------------------------------------------------------------------------------------------------------|
| The Brewster Historical Society, Inc. | Brewster | \$40,000 | Replace clapboards and trim at the 1799 Cobb House. |
| Fuller Craft Museum, Inc. | Brockton | \$200,000 | Partial roof replacement. |
| Brookline Music School | Brookline | \$17,000 | New flooring, lighting, and exterior doors. |
| The Permaculture Place, Inc. | Buckland | \$9,000 | Installation of visual and tactile exhibits that teach about permaculture, carbon sequestration, local action, and regenerative agriculture. |
| Arrow Street Arts, Inc. | Cambridge | \$200,000 | Renovate black box space and create a new street-facing studio for productions, rehearsals, and events at 2 Arrow Street. |
| Cambridge Multicultural Arts Center, Inc. | Cambridge | \$137,000 | New lighting and to create new accessible, all gender bathrooms. |
| The Carlisle Historical Society, Inc. | Carlisle | \$43,000 | Exterior and interior renovations to the Heald House Museum. |
| The Colrain Historical Society, Inc. | Colrain | \$15,000 | Create an accessible bathroom. |
| The Danvers Historical Society | Danvers | \$66,000 | Renovations to the first floor bathroom at the historic Glen Magna Farms mansion. |
| Cape Cod Center for the Arts, Inc. | Dennis | \$145,000 | Update heating and cooling systems. |
| Dighton Public Library | Dighton | \$200,000 | New HVAC system. |
| Duxbury Rural and Historical Society, Inc. | Duxbury | \$19,000 | New fiberglass gutters at the King Caesar House Museum. |
| Easton Children's Museum, Inc. | Easton | \$129,000 | Repairs to the roof, flashings, roof drainage systems, doors, windows, clapboard and trim, and to paint the entire building exterior. |
| Martha's Vineyard Preservation Trust, Inc. | Edgartown | \$145,000 | Accessibility upgrades. |
| Foxboro Regional Center for the Performing Arts, Inc. | Foxboro | \$81,000 | Safety and ADA compliant repairs to the exterior of the building. |
| Gloucester Meetinghouse Foundation | Gloucester | \$122,000 | Renovate the Meetinghouse Green including new plantings, graded ADA compliant walkways, replication of original iron work, lighting, entrance gates, and an underlayment for grass and trees. |
| Hassanamisco Nipmuc Band | Grafton | \$137,000 | Support the interior restoration of the Hassanamisco/Cisco Homestead and Museum, to resume use as a public museum educating visitors about the culture and history of the Nipmuc people and other southern New England tribes. |
| Triplex Cinema, Inc. | Great Barrington | \$200,000 | Support the reopening the second largest theater by making the building ADA-compliant and improving health and safety measures. |
| Friends of the Franklin County Fairgrounds, Inc. | Greenfield | \$77,000 | Support the second phase of a walkway improvement and replacement project. |
| Happier Valley Comedy, Inc. | Hadley | \$115,000 | Expand seating and to create an accessible stage. |
| Harvard's Cultural Collaborative, Inc. | Harvard | \$3,000 | Repairs and remediation work to water-damaged walls and roofing at Fivesparks. |

| Organization | Municipality | Grant | Description |
|---------------------------------------------------------------------------------|--------------|-----------|----------------------------------------------------------------------------------------------------------------------------------------------------------------------------------------------------------------------|
| Harwich Junior Theatre, Inc. | Harwich | \$12,000 | Replace two gas furnaces and air conditioning equipment with new high efficiency heat pump systems. |
| Town of Heath | Heath | \$17,000 | Rebuild and preserve the original paned windows in a 150 year old cultural and social building in the Town's center historic district. |
| South Shore Conservatory of Music, Inc. | Hingham | \$137,000 | Accessibility upgrades. |
| Hopkinton Center for the Arts | Hopkinton | \$83,000 | New LED theatrical lighting. |
| Hudson Cultural Alliance, Inc. | Hudson | \$200,000 | Schematic design for renovations to the Hudson Armory. |
| Leicester Historical Commission | Leicester | \$15,000 | Granite wall repairs, foyer renovations to the main house, and to replace windows and doors on the museum's Summer/Carriage House. |
| Ventfort Hall Mansion and Gilded Age Museum | Lenox | \$149,000 | Repair and rebuild four chimneys on the mansion roof. |
| Jean Appolon Expressions, Inc. | Malden | \$138,000 | Create a new accessible dance studio in a mixed-use building in Nubian Square. |
| Hatch Mill Group, Inc. | Marshfield | \$65,000 | Restorations to the 1872 circular sawmill. |
| Royall House Association | Medford | \$57,000 | Replace asphalt roofing on the main building, office addition, and porch with period-appropriate cedar shingles, and for wooden gutter and cornice repairs. |
| Albert F. Egan, Jr. and Dorothy H. Egan Foundation, Inc. | Nantucket | \$42,000 | Update heating and cooling system at the Shipwreck and Lifesaving Museum. |
| Nantucket Dreamland Foundation | Nantucket | \$105,000 | Painting and the replacement of exterior doors. |
| Nantucket Island School of Design and the Arts | Nantucket | \$158,000 | Support the reestablishment and structural restoration of NISDA's Artist Residency cottage colony buildings, moved from its former location due to repeated hurricane winds and severe storm surge flooding in town. |
| The Nantucket Historical Association | Nantucket | \$164,000 | Replace a chiller, remote roof-mounted condenser, and associated refrigerant piping. |
| Old Dartmouth Historical Society | New Bedford | \$200,000 | Support engineering and architectural design for a major campus expansion. |
| Newburyport Maritime Society, Inc. | Newburyport | \$73,000 | Masonry repairs and to restore the entry portico. |
| OnStage, Inc. | Newburyport | \$80,000 | Roof replacement and exterior repairs. |
| Society For The Development of Arts and Humanities of Greater Newburyport, Inc. | Newburyport | \$87,000 | Technological and aesthetic upgrades to the Arakelian Theater. |
| New Art Center in Newton, Inc. | Newton | \$137,000 | Accordion walls, acoustical panels, an ADA compliant ramp, storage, signage, and interior painting. |

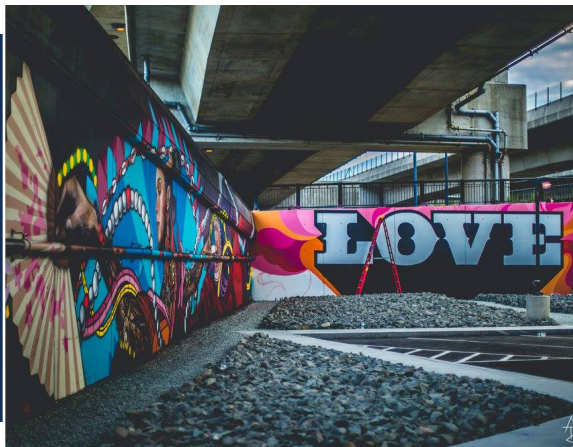
| Organization | Municipality | Grant | Description |
|-------------------------------------------------------|--------------|-----------|----------------------------------------------------------------------------------------------------------------------------------------------------------------------------------------------------------|
| Newton Cultural Alliance, Inc. | Newton | \$162,000 | Improvements to parking areas, signage, and landscaping at the Nathaniel Allen House. |
| Barrington Stage Company, Inc. | Pittsfield | \$112,000 | Update theatrical lighting and audio equipment for the St. Germain Stage at the Sydelle and Lee Blatt Performing Arts Center. |
| Berkshire County Historical Society, Inc. | Pittsfield | \$28,000 | Support the creation of a new public sewer connection. |
| Berkshire Film and Media Collaborative, Inc. | Pittsfield | \$200,000 | Complete predevelopment costs for the creation of BFMC+/Kemble Street Studios. |
| Berkshire Theatre Group, Inc. | Pittsfield | \$153,000 | Installation of solar panels on the Colonial Theatre and warehouse roof. |
| Hancock Shaker Village, Inc. | Pittsfield | \$200,000 | Expand gallery space, create a new climate-controlled collections storage area, install an elevator, and reconfigure lobby and reception areas. |
| Cape Cod Pilgrim Memorial Association of Provincetown | Provincetown | \$198,000 | Restoration and rehabilitation of the Pilgrim Monument's interior stairs and ramps. |
| City of Salem | Salem | \$200,000 | First phase of renovations to the Old Town Hall into a community arts and culture center, focusing on exterior historic restorations. |
| Town of Sandwich | Sandwich | \$200,000 | Exterior repairs, historic window replacements, and to expand gallery, program, and office space in the Sandwich Town Hall. |
| Sheffield Historical Society, Inc. | Sheffield | \$78,000 | Drainage, grout, and foundation work to the Old Stone Store. |
| Piti Theatre Company | Shelburne | \$125,000 | Transform a barn into Piti Theatre's Art & Ecology Center, a performing arts facility and collaborative workspace. |
| The Art Garden, Inc. | Shelburne | \$142,000 | Expand studio, office and storage space, and to create an accessible entryway. |
| Town of Spencer | Spencer | \$100,000 | Repairs to the exterior envelope of the Richard Sugden Public Library. |
| Springfield Museums Corporation | Springfield | \$161,000 | Roof replacement at the D'Amour Museum of Fine Arts. |
| Randall Library | Stow | \$100,000 | An elevator. |
| Martha's Vineyard Film Society, Inc. | Tisbury | \$39,000 | New laser projector and server. |
| Armenian Museum of America, Inc. | Watertown | \$146,000 | Roof replacement. |
| Wayland Historical Society | Wayland | \$26,000 | New heat pump system and electrical upgrades at the Grout-Heard House Museum. |
| Wellesley Historical Society | Wellesley | \$200,000 | An accessible ramp, HVAC system, to convert the basement into the main collection storage space, and to construct a stairway at the Stanwood House which will serve as the new Wellesley History Center. |

| Organization | Municipality | Grant | Description |
|-------------------------------------------|--------------|-----------|--------------------------------------------------------------------------------------------------------------------------------------------------------------------------|
| Friends of the Wendell Meetinghouse, Inc. | Wendell | \$50,000 | Transform an 1846 church building into a performance space with the completion of ADA-compliant bathrooms, a warming kitchen, and a ground-source heat-pump HVAC system. |
| The Griffin Museum of Photography, Inc. | Winchester | \$100,000 | Interior renovations, a roof replacement, and upgrades to plumbing and energy systems. |
| ArtsWorcester, Inc. | Worcester | \$64,000 | Renovate a 511-square-foot office into a learning, meeting, and work space. |

Feasibility/Technical Assistance Grants

| Organization | Municipality | Grant | Description |
|-------------------------------------------------|------------------|----------|----------------------------------------------------------------------------------------------------------------------------------------------------------------------------|
| Amherst Historical Society | Amherst | \$30,000 | Access plan and conditions assessment. |
| John F. Kennedy Hyannis Museum Foundation, Inc. | Barnstable | \$35,000 | Schematic design for renovations to exhibit space. |
| Greater Roxbury Arts and Cultural Center, Inc. | Boston | \$35,000 | Cost estimating and business planning to create a visual and performing arts center in Nubian Square. |
| Street Theory Collective, Inc. | Cambridge | \$35,000 | Business and operations planning for the opening of a cultural facility that will house an incubator, artist-in-residency, and gallery space dedicated to BIPOC creatives. |
| World Music, Inc. | Cambridge | \$35,000 | Value engineering and construction design for the new performing arts center 585 Arts. |
| Children's Museum of Franklin | Franklin | \$35,000 | Study the feasibility of potential physical locations to create a children's museum in downtown Franklin. |
| Gloucester Stage Company, Inc. | Gloucester | \$30,000 | Capital campaign feasibility study. |
| Berkshire Pulse, Inc. | Great Barrington | \$10,000 | Study the feasibility of expanding studio space into the second floor of 420 Park Street. |
| Pioneer Valley Symphony, Inc. | Greenfield | \$35,000 | Feasibility study, architectural plans, and capital campaign planning study for a new Music Center facility in Greenfield. |
| Holyoke Art | Holyoke | \$22,000 | Study the feasibility of utilizing 52 Main Street in Holyoke as the main entrance, offices, bathrooms, classrooms, and additional makerspace. |
| Town of Hopedale | Hopedale | \$28,000 | Architectural and engineering plans to renovate the historic town hall auditorium into a new cultural performing arts center. |

| Organization | Municipality | Grant | Description |
|----------------------------------------|---------------|----------|-----------------------------------------------------------------------------------------------------------------------------------------------------------|
| Lynn Historical Society, Inc. | Lynn | \$25,000 | Decarbonization assessment and to develop a plan to address capital maintenance. |
| Marion Art Center, Inc. | Marion | \$1,400 | Conditions assessment and architectural plans for building renovations. |
| Town of Monterey | Monterey | \$33,000 | Architectural and engineering plans for the construction of new open air pavilion as part of the Monterey Community Center. |
| Belleville Arts Foundation | Newburyport | \$35,000 | Transform the Belleville Meetinghouse into a community arts center. |
| North Andover Historical Society | North Andover | \$20,000 | Exhibit design of a history gallery at the Stevens Center. |
| Historic Northampton, Inc. | Northampton | \$25,000 | Structural engineering evaluation of 1719 Parsons House and to assess its architectural and archeological history, ADA compliance, and energy efficiency. |
| The Northampton Academy of Music, Inc. | Northampton | \$6,000 | Hire a theatrical consultant and a structural engineer to prepare designs and BID documents for a code compliant fire curtain. |
| Pinewoods Camp, Inc. | Plymouth | \$21,000 | Capital campaign feasibility study and to plan for the incorporation of an acquired abutting property into the campus. |
| Town of Provincetown | Provincetown | \$18,000 | Study the viability of “the Shed,” an auxiliary building at the Provincetown Public Library, to become a dedicated space for programming. |
| Shrewsbury Historical Society | Shrewsbury | \$22,000 | Conduct a feasibility study for compliance with state and federal accessibility regulations regarding historic places. |



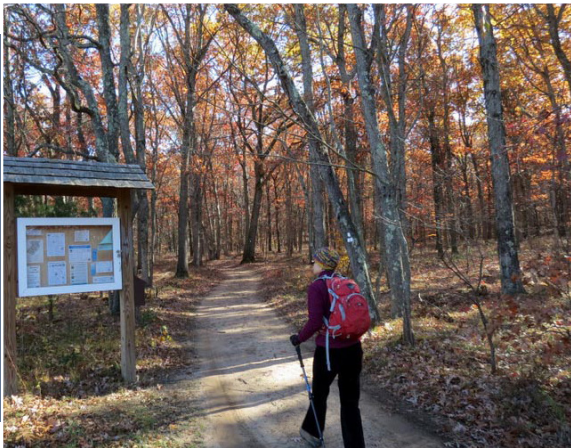
Street Theory Collective, Cambridge

“The CFF has played a pivotal role in our initial space planning and feasibility studies. It has provided us with the essential expertise to strategically evaluate our organization, programs, and potential for future growth in an impactful and scalable way.”

— Felice Quinonez, Executive Director

Systems Replacement Plan Grants

| Organization | Municipality | Grant | Description |
|------------------------------------------------------|----------------|----------|----------------------------------|
| Double Edge Theatre Productions, Inc. | Ashfield | \$14,000 | 20-year capital needs assessment |
| Boston Lyric Opera Company, Inc. | Boston | \$8,000 | 20-year capital needs assessment |
| MassArt Art Museum | Boston | \$8,000 | 20-year capital needs assessment |
| Old North Illuminated, Inc. | Boston | \$9,000 | 20-year capital needs assessment |
| Irish Cultural Centre, Inc. | Canton | \$9,000 | 20-year capital needs assessment |
| Friends of Nobska Light, Inc. | Falmouth | \$8,000 | 20-year capital needs assessment |
| Rocky Neck Art Colony, Inc. | Gloucester | \$8,000 | 20-year capital needs assessment |
| Lowell Parks and Conservation Trust, Inc. | Lowell | \$8,000 | 20-year capital needs assessment |
| Gallery X, Inc. | New Bedford | \$8,000 | 20-year capital needs assessment |
| 1794 Meetinghouse, Inc. | New Salem | \$8,000 | 20-year capital needs assessment |
| Pinewoods Camp, Inc. | Plymouth | \$14,000 | 20-year capital needs assessment |
| Pondville Baptist Church, Incorporated | Plymouth | \$8,000 | 20-year capital needs assessment |
| Scituate Historical Society | Scituate | \$8,000 | 20-year capital needs assessment |
| Mudflat Pottery School, Inc. | Somerville | \$8,000 | 20-year capital needs assessment |
| The Martha's Vineyard Museum, Inc. | Vineyard Haven | \$8,500 | 20-year capital needs assessment |
| The Dorothy and Charles Mosesian Center for the Arts | Watertown | \$8,000 | 20-year capital needs assessment |
| Town of Wrentham | Wrentham | \$8,000 | 20-year capital needs assessment |



Tamarack Hollow Nature and Cultural Center, Windsor

"The Cultural Facilities Fund has provided our organization the opportunity to begin the construction of our nature and cultural education center and show our community what our long term vision is."

— Aimee S. Gelinis, Director

APPENDIX B

Geographic Distribution for Round 16 Recommendations

| Budget Size | Apps | % | Recommended | % | Added SRPs | Request | % | Recommended | % |
|---------------------------|------|------|-------------|------|------------|--------------|------|-------------|------|
| \$5M and greater | 24 | 10% | 4 | 5% | | \$4,063,452 | 18% | \$533,000 | 9% |
| \$1M to \$5M | 47 | 20% | 21 | 24% | | \$6,044,818 | 26% | \$1,873,500 | 30% |
| Less than \$1M | 135 | 58% | 53 | 60% | | \$10,388,982 | 45% | \$3,074,400 | 50% |
| Municipalities | 21 | 9% | 10 | 11% | | \$2,247,122 | 10% | \$673,000 | 11% |
| Colleges/ Universities | 4 | 2% | 0 | 0% | | \$303,955 | 1% | \$0 | 0% |
| Total | 231 | 100% | 88 | 100% | | \$23,048,329 | 100% | \$6,153,900 | 100% |

| Region | Apps | % | Recommended | % | Added SRPs | Request | % | Recommended | % |
|----------------|------|------|-------------|------|------------|--------------|------|-------------|------|
| Greater Boston | 52 | 23% | 20 | 23% | | \$5,464,635 | 24% | \$1,576,000 | 26% |
| Central | 21 | 9% | 7 | 8% | | \$2,234,737 | 10% | \$432,000 | 7% |
| Metrowest | 13 | 6% | 4 | 5% | | \$1,255,050 | 5% | \$321,000 | 5% |
| Northeast | 24 | 10% | 13 | 15% | | \$1,951,205 | 8% | \$823,000 | 13% |
| Southeast | 69 | 30% | 24 | 27% | | \$6,427,442 | 28% | \$1,574,900 | 26% |
| Western | 52 | 23% | 20 | 23% | | \$5,715,260 | 25% | \$1,427,000 | 23% |
| Total | 231 | 100% | 88 | 100% | | \$23,048,329 | 100% | \$6,153,900 | 100% |

Budget Size Distribution for All Rounds of CFF Funding

| Budget Size | Apps | % | Grants | % | Added SRPs | Request | % | Grants | % |
|-----------------------|------|------|--------|------|------------|---------------|------|---------------|------|
| \$5M and greater | 276 | 11% | 218 | 15% | 1 | \$101,856,280 | 21% | \$39,315,801 | 23% |
| \$1M to \$5M | 570 | 23% | 403 | 27% | 7 | \$120,177,892 | 25% | \$49,777,547 | 29% |
| Less than \$1M | 1409 | 56% | 761 | 51% | 21 | \$196,986,622 | 41% | \$67,067,898 | 39% |
| Municipalities | 148 | 6% | 66 | 4% | 1 | \$33,732,127 | 7% | \$8,378,700 | 5% |
| Colleges/Universities | 107 | 4% | 37 | 2% | | \$32,987,566 | 7% | \$6,766,600 | 4% |
| Total | 2510 | 100% | 1485 | 100% | 30 | \$485,740,487 | 100% | \$171,306,546 | 100% |

| Region | Apps | % | Grants | % | Added SRPs | Request | % | Grants | % |
|----------------|------|------|--------|------|------------|---------------|------|---------------|------|
| Greater Boston | 674 | 27% | 428 | 29% | 2 | \$163,290,555 | 34% | \$56,725,154 | 33% |
| Central | 226 | 9% | 128 | 9% | 6 | \$45,515,025 | 9% | \$16,078,146 | 9% |
| Metrowest | 165 | 7% | 94 | 6% | 2 | \$31,291,537 | 6% | \$10,157,075 | 6% |
| Northeast | 296 | 12% | 168 | 11% | 4 | \$45,760,368 | 9% | \$14,650,378 | 9% |
| Southeast | 613 | 24% | 350 | 24% | 7 | \$99,935,609 | 21% | \$35,609,768 | 21% |
| Western | 536 | 21% | 317 | 21% | 9 | \$99,947,393 | 21% | \$38,086,025 | 22% |
| Total | 2510 | 100% | 1485 | 100% | 30 | \$485,740,487 | 100% | \$171,306,546 | 100% |